

BRASTEMP

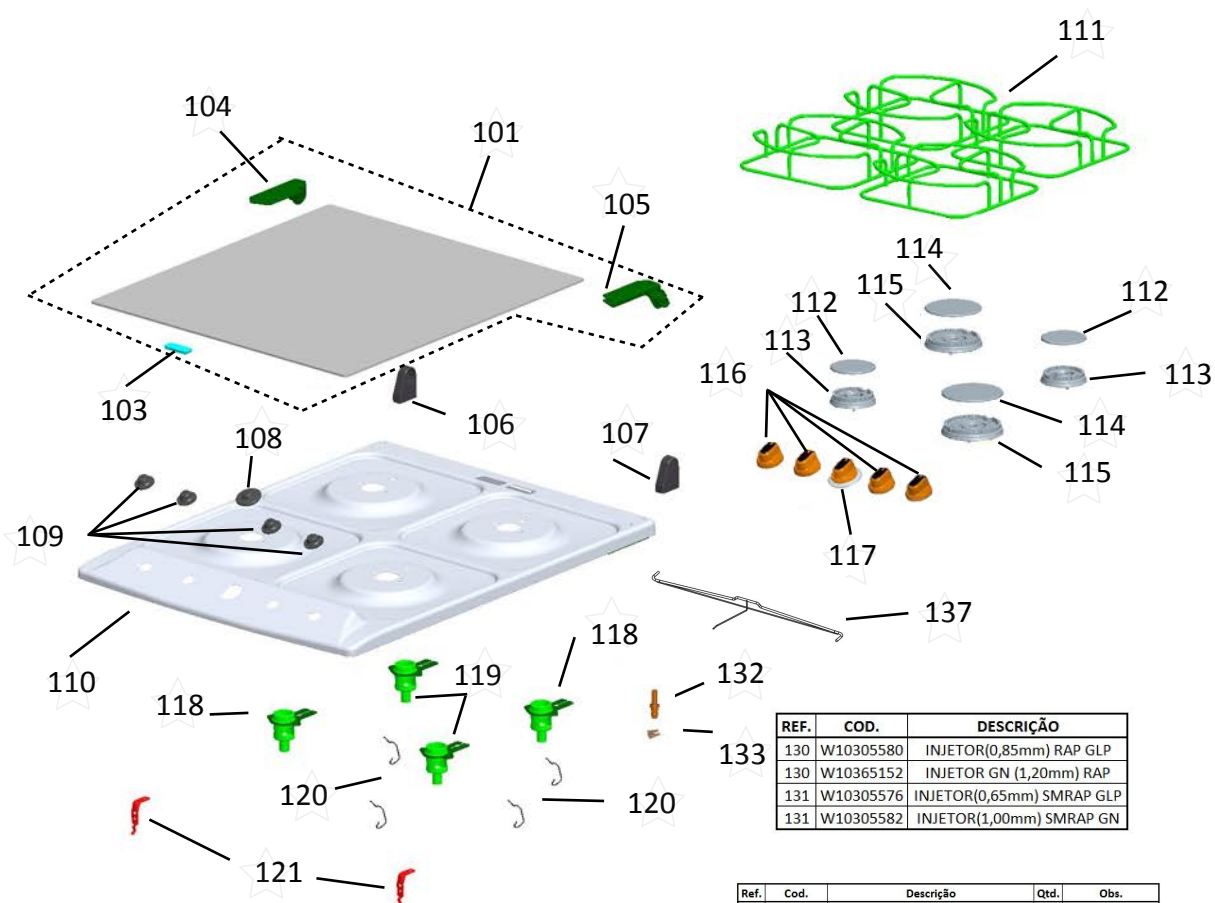
CATÁLOGO DE PEÇAS

Fogão 4 Bocas

BFO4TAR

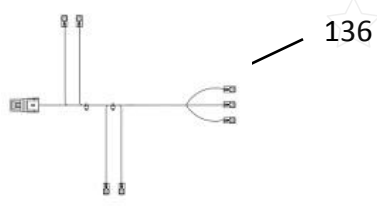
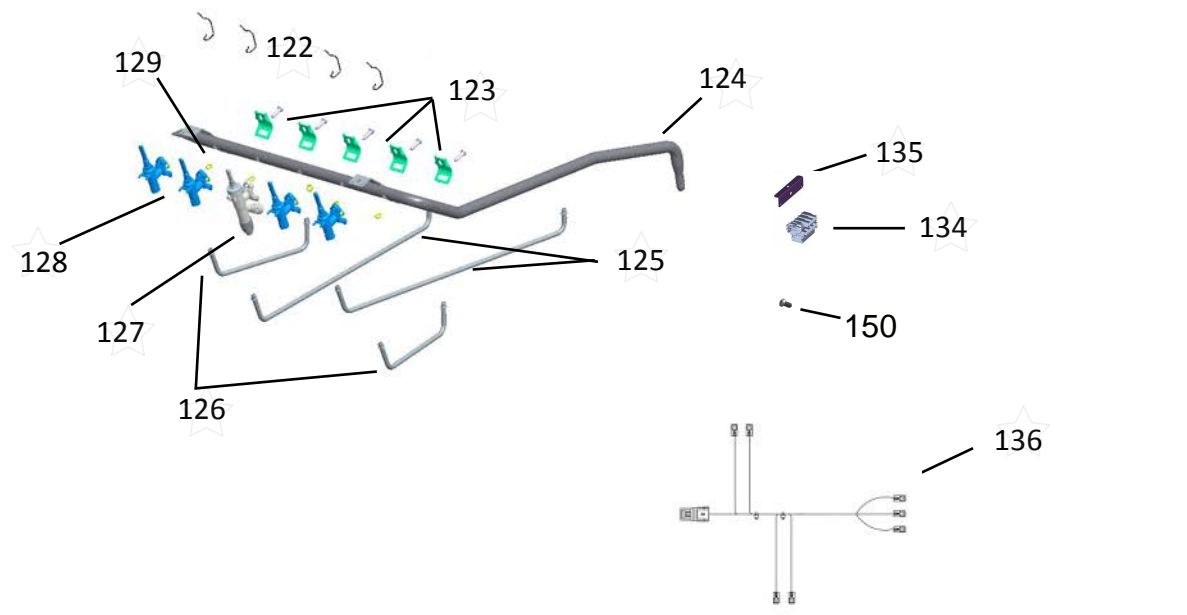


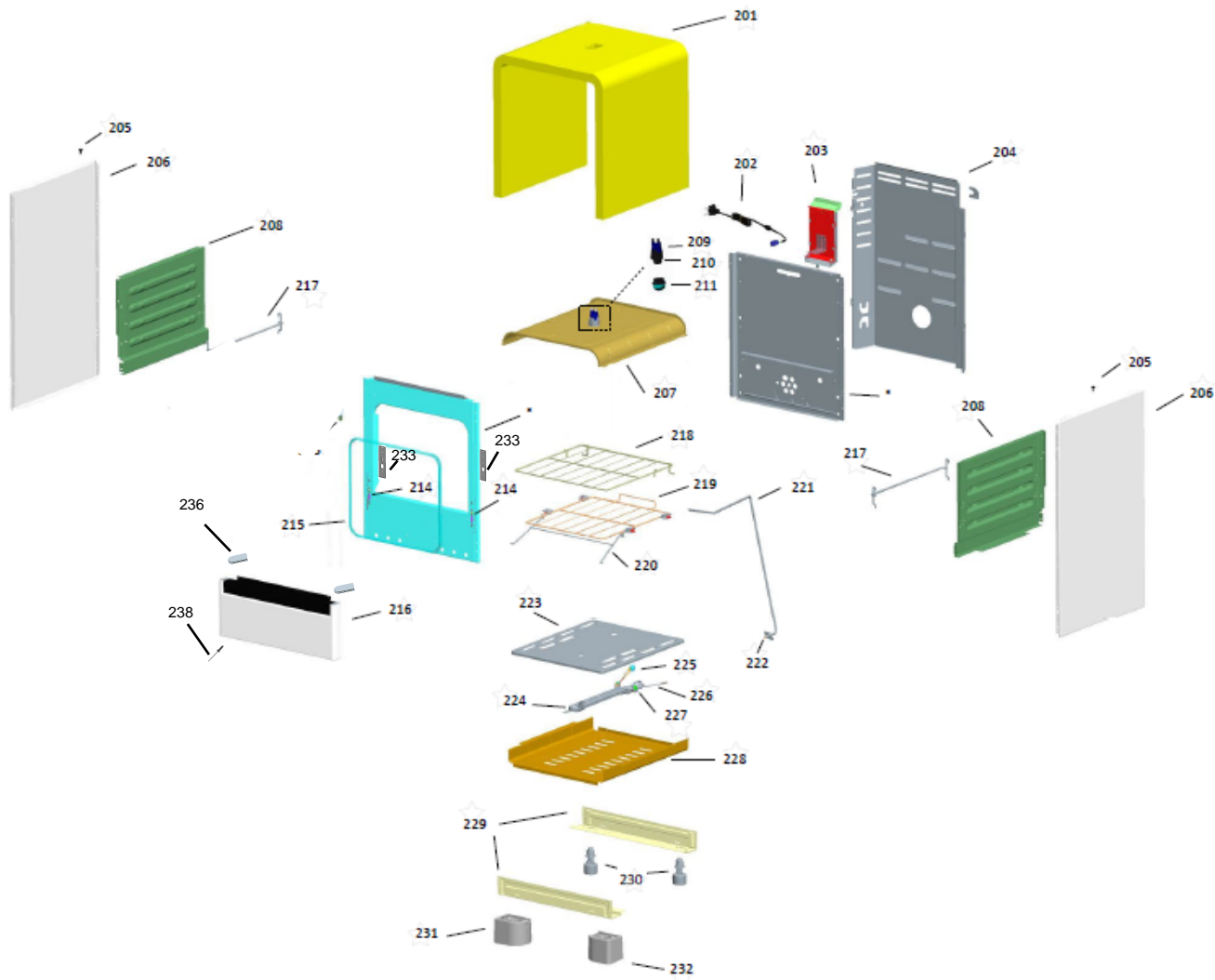
Revisão	Motivo	Páginas Alteradas	Elaborado Por	Revisado Por	Data
00	Clique aqui para digitar texto.	Clique aqui para digitar texto.	Ricardo A Vieira	Clique aqui para digitar texto.	11/11/2013

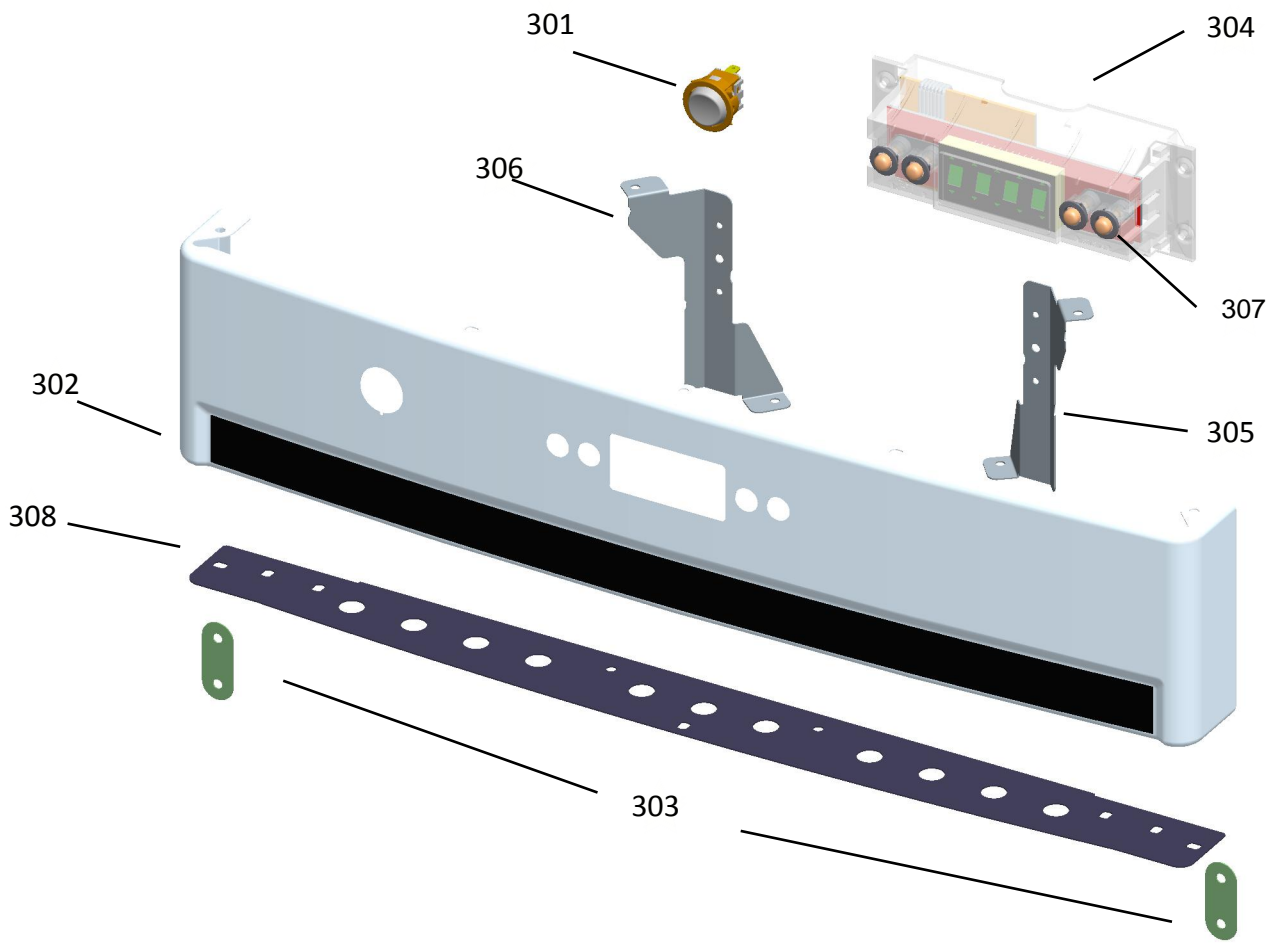


REF.	COD.	DESCRIÇÃO
130	W10305580	INJETOR(0,85mm) RAP GLP
130	W10365152	INJETOR GN (1,20mm) RAP
131	W10305576	INJETOR(0,65mm) SMRAP GLP
131	W10305582	INJETOR(1,00mm) SMRAP GN

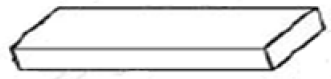
Ref.	Cod.	Descrição	Qtd.	Obs.
999	326065186	PARAFUSO AA CABEÇA LENTILHA Ø 4,2	8	Parafuso da mesa



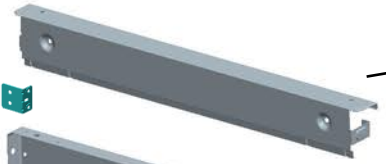




409



410



403

401



402



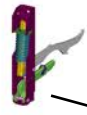
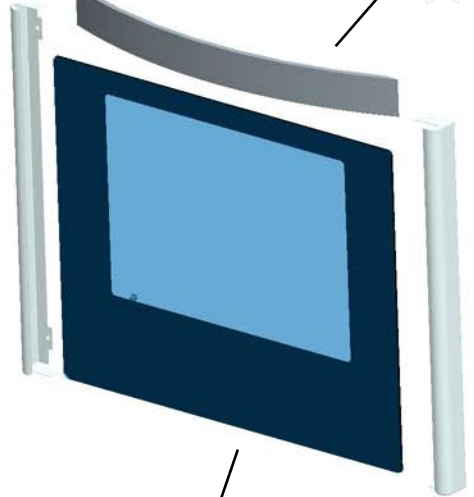
408



404



405



407



412



405

500

Faça com a Brastemp
antes de qualquer instalação para evitar danos ao produto e ao usuário.
Ler atentamente o manual de instruções antes de utilizar o produto.
Em caso de dúvidas, consulte o site www.brastemp.com.br ou o telefone 0800 00 10 10.



501



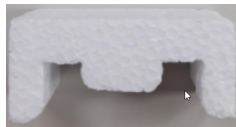
502



503



504



505



506



508



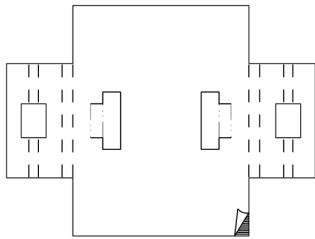
509



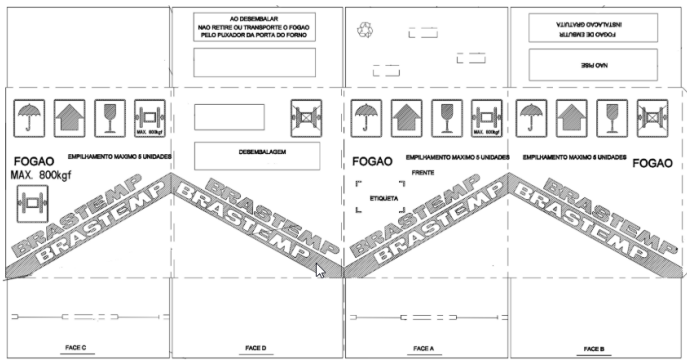
510



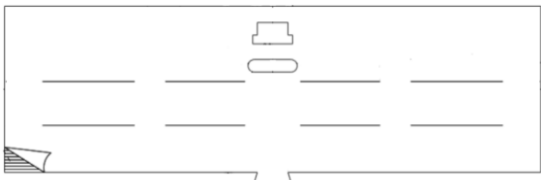
511



512



513



515



516

520



521

ESTE FOGÃO FOI CONVERTIDO PARA USO COM GÁS NATURAL, PEÇAS FORNECIDAS PELA MULTIGRÁS S.A. ELETRODOMÉSTICOS. PRESSÃO NOMINAL RECOMENDADA : 200 mm CA. PRESSÃO MÁXIMA : 250 mm CA. CÓDIGO: 326036404

519



518